

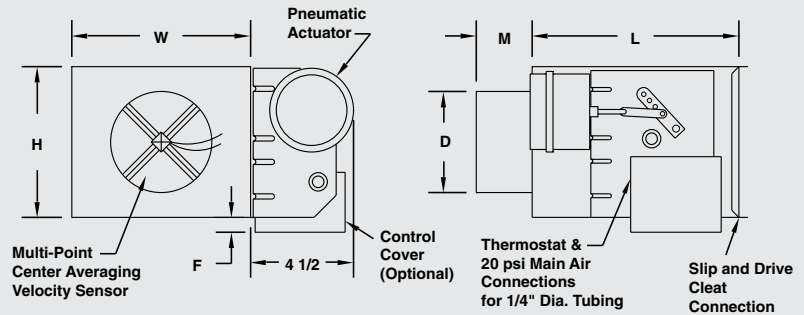
# Titus ESV

## Single Duct Terminal

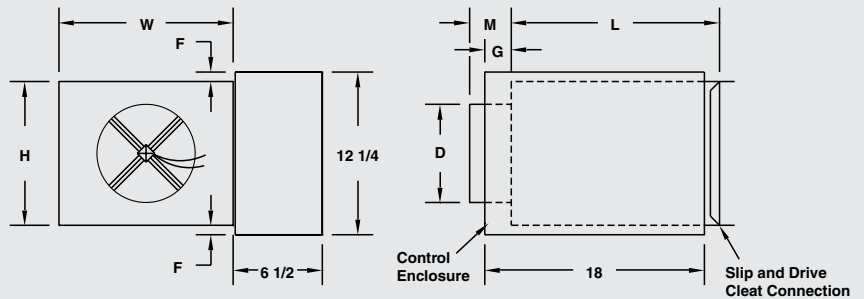
- Standard AeroCross™ multi-point center averaging velocity sensor
- Standard dual density insulation
- Standard 22-gauge casing with slip and drive discharge connection
- Controls supplied by TITUS are factory calibrated for a quicker start-up



### PESV Pneumatic



### DESV No Controls w/ enclosure



Inlet Size	cfm Range	D	F		G	H	L	M	W
			PESV	DESV					
6	0-500	5 <sup>7</sup> / <sub>8</sub>	1 <sup>7</sup> / <sub>8</sub>	2 <sup>1</sup> / <sub>8</sub>	7 <sup>3</sup> / <sub>8</sub>	8	15 <sup>1</sup> / <sub>2</sub>	3 <sup>3</sup> / <sub>8</sub>	12
8	0-900	7 <sup>7</sup> / <sub>8</sub>	7 <sup>7</sup> / <sub>8</sub>	1 <sup>1</sup> / <sub>8</sub>	7 <sup>3</sup> / <sub>8</sub>	10	15 <sup>1</sup> / <sub>2</sub>	3 <sup>3</sup> / <sub>8</sub>	12
10	0-1400	9 <sup>7</sup> / <sub>8</sub>	-	-	5 <sup>3</sup> / <sub>8</sub>	12 <sup>1</sup> / <sub>2</sub>	15 <sup>1</sup> / <sub>2</sub>	3 <sup>3</sup> / <sub>8</sub>	14
12	0-2000	11 <sup>7</sup> / <sub>8</sub>	-	-	5 <sup>3</sup> / <sub>8</sub>	15	15 <sup>1</sup> / <sub>2</sub>	3 <sup>3</sup> / <sub>8</sub>	16
14	0-3000	13 <sup>7</sup> / <sub>8</sub>	-	-	3 <sup>3</sup> / <sub>8</sub>	17 <sup>1</sup> / <sub>2</sub>	15 <sup>1</sup> / <sub>2</sub>	3 <sup>3</sup> / <sub>8</sub>	20
16	0-4000	15 <sup>7</sup> / <sub>8</sub>	-	-	3 <sup>3</sup> / <sub>8</sub>	18	15 <sup>1</sup> / <sub>2</sub>	3 <sup>3</sup> / <sub>8</sub>	24
24X16	0-8000	23 <sup>7</sup> / <sub>8</sub> - 15 <sup>7</sup> / <sub>8</sub>	7 <sup>7</sup> / <sub>8</sub>	1 <sup>1</sup> / <sub>8</sub>	5 <sup>3</sup> / <sub>8</sub>	18	15	3 <sup>3</sup> / <sub>8</sub>	38

All dimensions are in inches



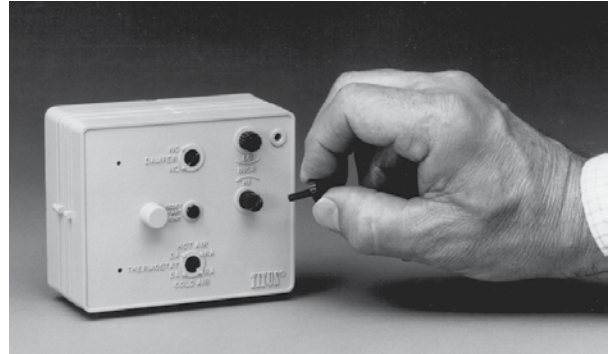
## Titus Parts

### VAV Box Accessories

#### Titus II Pneumatic Controller

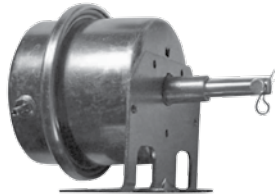


- Accurate control over a duct velocity range of 0–3000 fpm
- Operates at low system pressures; as effective at 0.03” Ps as at 6.0” Ps
- Pressure independent
- Reset span remains constant regardless of maximum and minimum cfm adjustments; the factory set 5 psi span is adjustable from 3 -10 psi to match any thermostat
- Reset start point is adjustable from 3–13 psi to work with accessories such as reheat coils (factory setting is 8 psi)
- Thermostat switch changes the action from direct acting to reverse acting without additional calibration; no additional relays required—great for quick retrofit installation
- Damper switch changes the operation of the control from normally open to normally closed without re-calibration; no additional relays required
- All adjustments are made with a hex shanked knob stored in the face of the TITUS II controller
- Operates on a control air pressure of 15–25 psi
- Control air consumption is no more than 1.2 scfh



#### Pneumatic Actuator

5–10 PSI



#### Fan Speed Controller

115V, 277V



#### Pneumatic Tees

Size: 1/4" x 1/4" x 1/4"

- Used on Titus VAV boxes to connect flow sensor, controller and actuator tubing.



#### Toggle Disconnect Switch

- Toggle Disconnect with base plate assembly; 20 Amps; 1-1.5 horse power 120V-277V capacity



#### Aero Cross™ Sensor

Available in sizes  
6", 8", 10", 12", 14", 16"



#### Transformers

120/24 VAC 40 VA  
277/24 VAC 40 VA

